



The Great Grid Upgrade

Sea Link

Sea Link

Volume 9: Examination Submissions

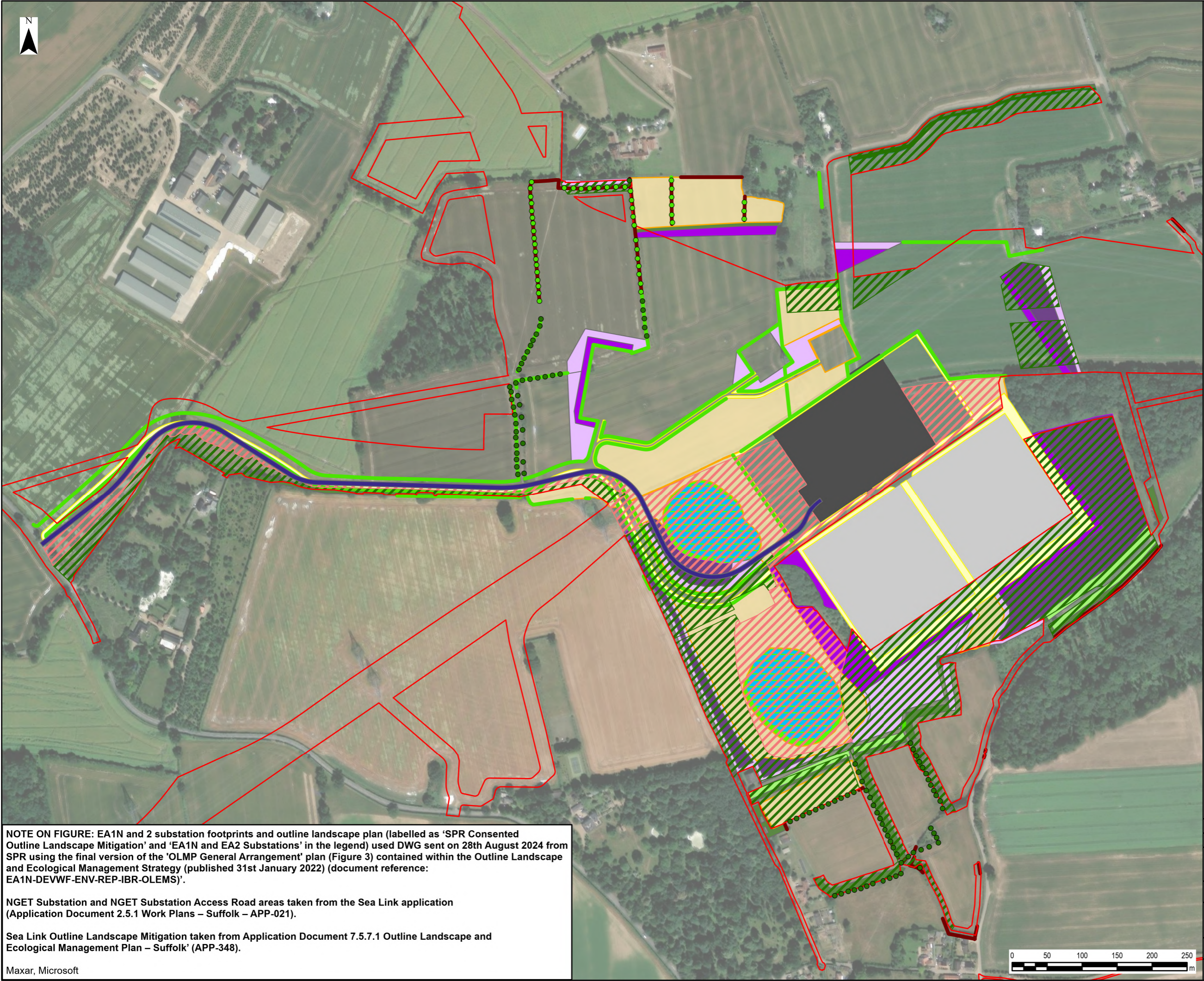
Document 9.6.2 Appendix B: Consented SPR Outline Landscape Mitigation overlain with the Sea Link Outline Landscape Mitigation for NGET Substation (Scenario 1)

Planning Inspectorate Reference: EN20026

Version: A
July 2025

nationalgrid

Page intentionally blank



Legend

- Sea Link Order Limits
- NGET Substation
- NGET Substation Access Road
- EA1N & EA2 Substations

SPR Consented Outline Landscape Mitigation

- Potential Early Tree Planting along Hedgerows
- Proposed Post-Construction Tree Planting along Hedgerows
- Potential Early Hedgerow Planting
- Proposed Post-Construction Hedgerow
- Amenity grass seed mix for embankments and verges
- Species rich grassland seed mix areas
- SuDS Species rich grassland seed mix areas
- Potential Early Core Woodland Planting
- Potential Early Edge Woodland Planting
- Potential Early Screen Woodland Planting
- Proposed Post-Construction Core Woodland
- Proposed Post-Construction Edge Woodland
- Proposed Post-Construction Screen Woodland
- Sloping Banks
- Potential SuDS Basin

Sea Link Outline Landscape Mitigation

- Native woodland and tree planting
- Species rich neutral grassland

0	24/07/2025	EXAMINING AUTHORITY REQUEST (8TH JULY)	EB	DF	CW
Rev	Date	Description	GIS	Chk	App

nationalgrid

Scheme: SEA LINK

Document Title: APPENDIX B CONSENTED SPR OUTLINE LANDSCAPE MITIGATION OVERLAIN WITH THE SEA LINK OUTLINE LANDSCAPE MITIGATION FOR NGET SUBSTATION (SCENARIO 2)

Creator: EB	Date: 24/07/2025	Checker: DF	Date: 24/07/2025	Approver: CW	Date: 24/07/2025
Document Ref: 9.6.2	Scale: 1:5,000	Format: A3	Sheets: 1	Rev: 0	

NOTE ON FIGURE: EA1N and 2 substation footprints and outline landscape plan (labelled as ‘SPR Consented Outline Landscape Mitigation’ and ‘EA1N and EA2 Substations’ in the legend) used DWG sent on 28th August 2024 from SPR using the final version of the ‘OLMP General Arrangement’ plan (Figure 3) contained within the Outline Landscape and Ecological Management Strategy (published 31st January 2022) (document reference: EA1N-DEVWF-ENV-REP-IBR-OLEMS)’.

NGET Substation and NGET Substation Access Road areas taken from the Sea Link application (Application Document 2.5.1 Work Plans – Suffolk – APP-021).

Sea Link Outline Landscape Mitigation taken from Application Document 7.5.7.1 Outline Landscape and Ecological Management Plan – Suffolk’ (APP-348).

Maxar, Microsoft

National Grid plc
National Grid House,
Warwick Technology Park,
Gallows Hill, Warwick.
CV34 6DA United Kingdom

Registered in England and Wales
No. 4031152
nationalgrid.com